

© 2013 Fidelix

WebVision Installation

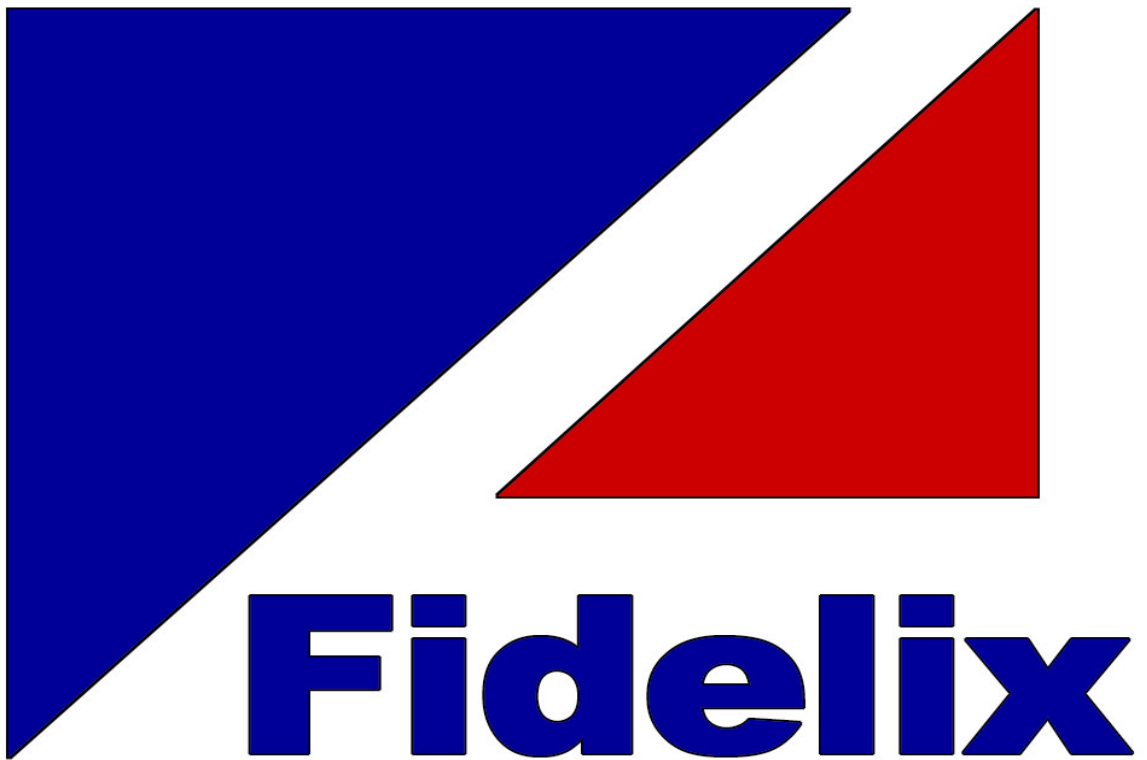


Table of Contents

	0
Part I WebVision Installation	3
1 Requirements.....	3
Part II Installation	3
1 Language	3
2 Welcome	4
3 Choose the features to be installed.....	4
4 Install SQL server.....	5
5 Choose the license options.....	6
6 Choose the application directory.....	7
7 Set user information.....	8
8 Shortcut.....	9
9 Verify installation.....	10
Part III Activation	12
1 Activating the installation.....	12
Index	0

1 WebVision Installation

This manual contains the instruction to installing Fidelix WebVision 8.64

1.1 Requirements

Requirements for a computer where WebVision 8 is installed:

-PC: Minimum 1.80 GHz Dual-Core Processor, e.g. Inter Core i7-4500U. Recommendation: 2.90 GHz Quad-Core, e.g. Intel Core i7-4600M. Minimum 4Gb Memory, Recommendation: 6Gb Memory. Minimum 128 Gb Disk space, Recommendation: 256 Gb Disk space

-Operating system:

-The following operating systems are supported:

-Win 7 Pro, Enterprise or Ultimate

-Win 8 Pro or Enterprise

-Windows Server 2008 R2 (attn! Windows Server 2008 is not supported)

-Windows Server 2012

-Windows Server 2012 R2

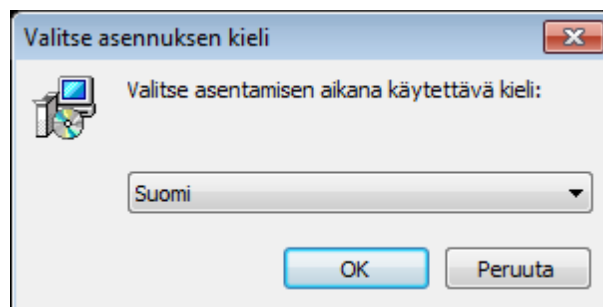
-Operating system must be fully updated

-Note that Windows Server products have strict password requirement for database servers than other Windows versions

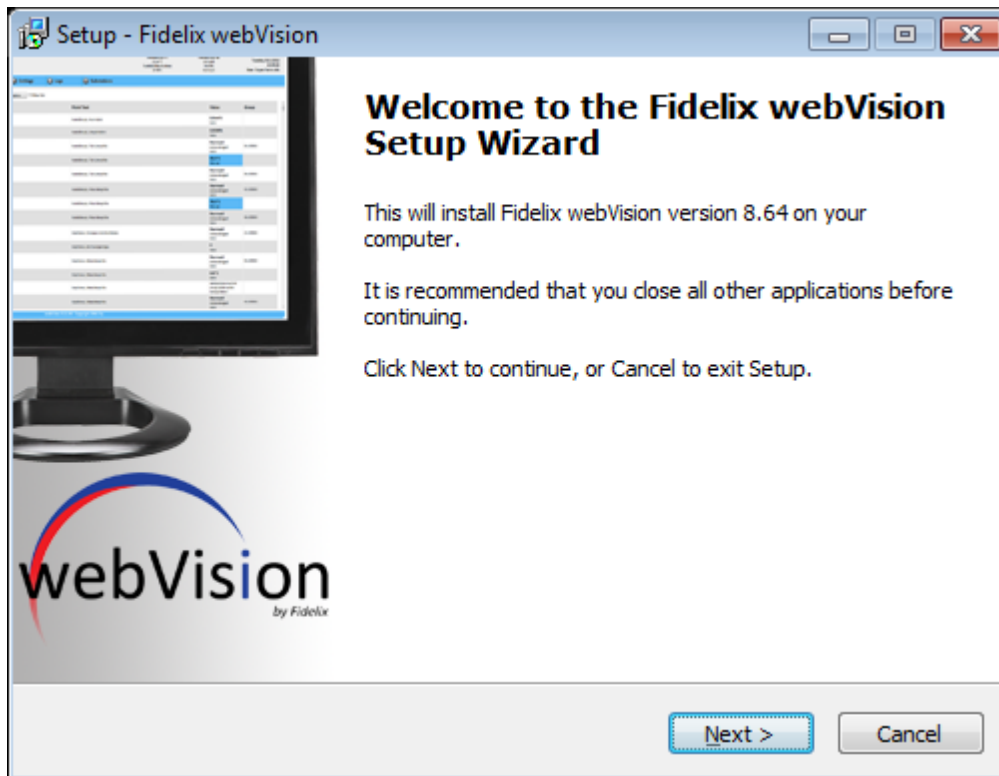
2 Installation

2.1 Language

Choose the language to be used during the installation. You may choose the software UI language later.



2.2 Welcome



2.3 Choose the features to be installed

Choose which features of WebVision you wish to install

FdxOnline - Management software for webVision components

webVision - Browser application

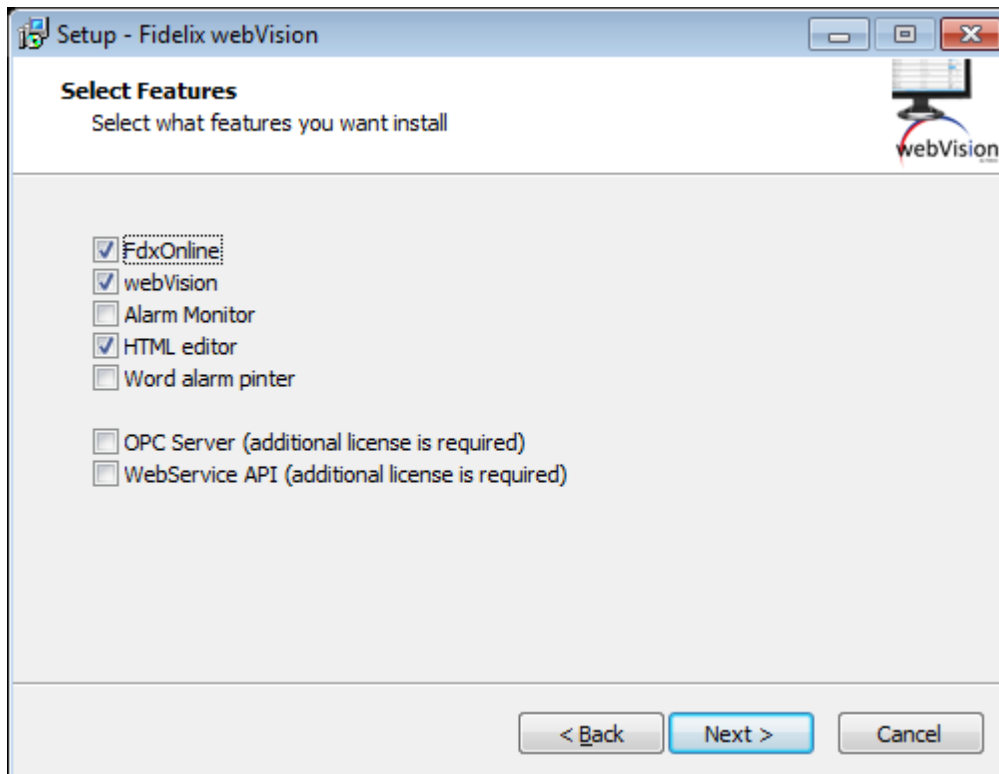
Alarm Monitor - Not yet implemented in version 8.64

HTML Editor - Application for creating and editing pictures in webVision and substations

Alarm Printer - Not yet implemented in version 8.64

OPC server - Not yet implemented in version 8.64

WebService API - WebService Interface, required e.g. for webVision InfoTV



2.4 Install SQL server

Choose what type of an installation and which parameters you want for the SQL Server

Select one of the following:

- 1) Install SQL Server 2008 R2 Express
- 2) Use an existing SQL Server. In this case, you do not need to care about the other settings
- 3) No SQL connection. In this case, features requiring an SQL connection, such as history information and logs (including access control) will not be available. (ATTENTION! Using webVision without the database features may slow down the application). SQL Server may also be installed later.

ATTENTION! If you are updating version 8.xx to a newer version, always use option 2 (use an existing SQL server)

The following settings need to be given if you are installing the SQL server:

Server: IPv4 address of the SQL Server. Put localhost or 127.0.0.1 if you are installing

Instance: The name of the instance of the SQL Server you are installing.

SA Password: Password for the SA (System Administrator) of the SQL Server

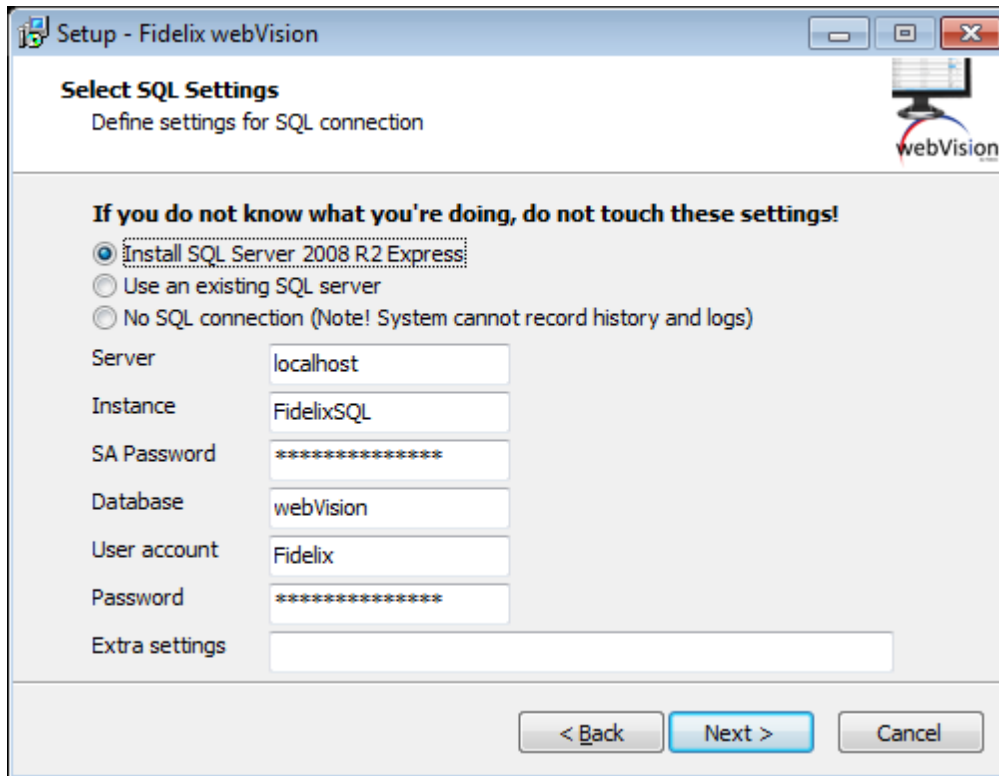
Database: The name of the database

User Account: The name of the default user for the SQL Server

Password: Password for the default user for the SQL Server

Other settings: You may also enter additional settings that will be added to the command line of the SQL server install command

ATTENTION! If you install the database to a Windows Server product, the operating system requires a stronger password than Windows 7 or Windows 8. The password should contain letters, numbers and special characters



2.5 Choose the license options

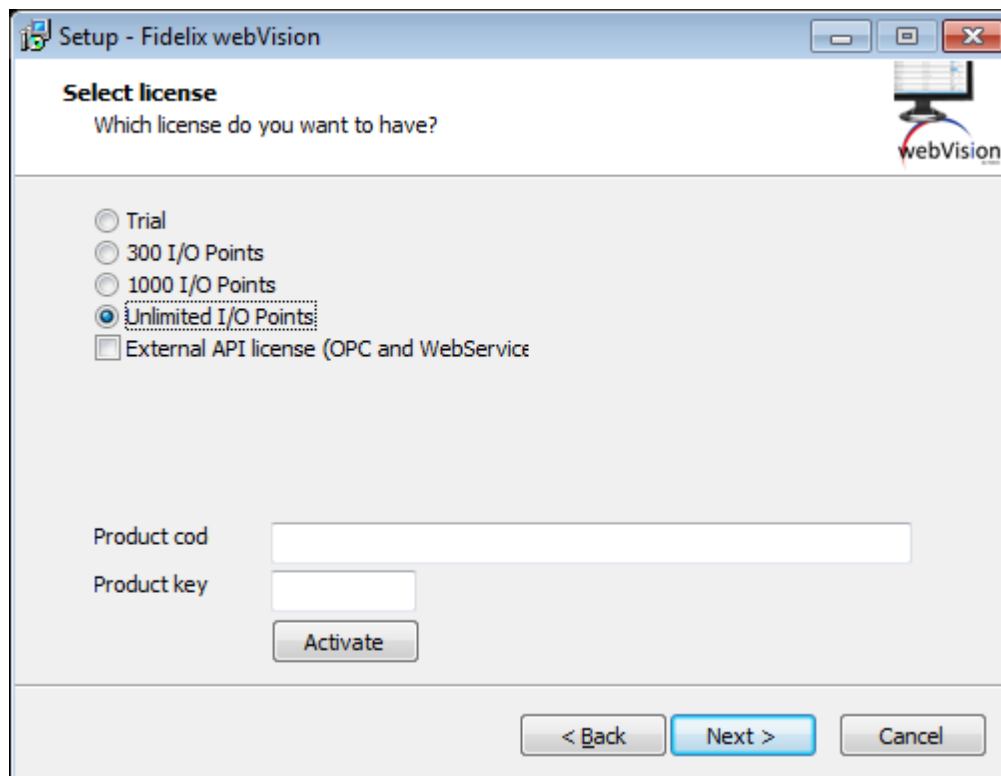
Choose the license you wish to use. You may also re-define and activate the license later on.

The trial version is functional for 120 days.

You may license to work with 300, 1000 or an unlimited amount of points. Only I/O points are counted for the license.

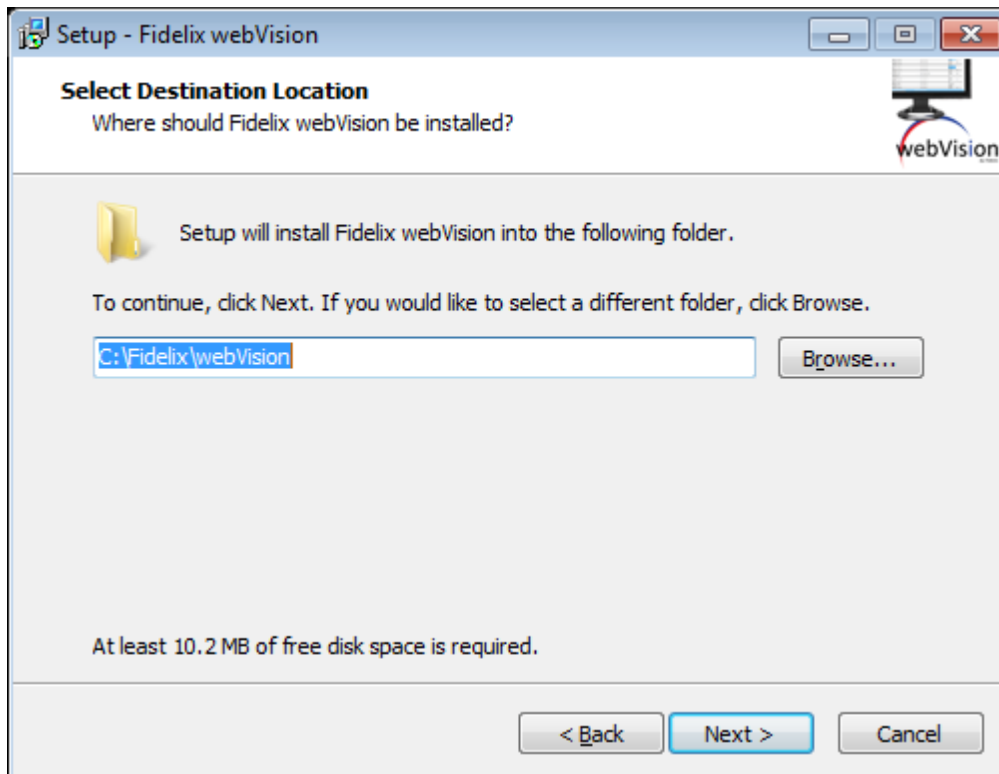
You may also select a license for an external API. At the moment, you may choose a license for OPC or WebService integration. Both features are tied to the same license. OPC features are not yet implemented in version 8.64

The product code and product key will be inserted after install. The possibility to activate the software during installation is not yet implemented in version 8.64



2.6 Choose the application directory

Choose the folder, where you wish to install the application. If you are updating an existing version, choose the folder where the existing application is already installed. Otherwise, the installer will install a new instance of the software.

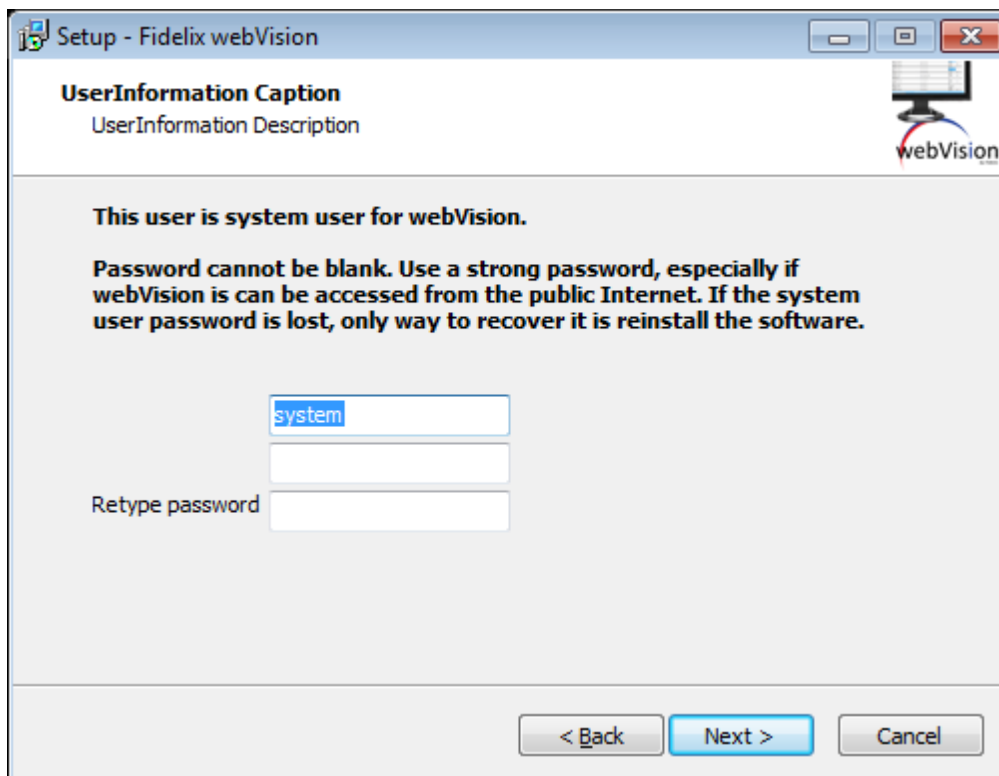


2.7 Set user information

Set the name and password for the WebVision main user.

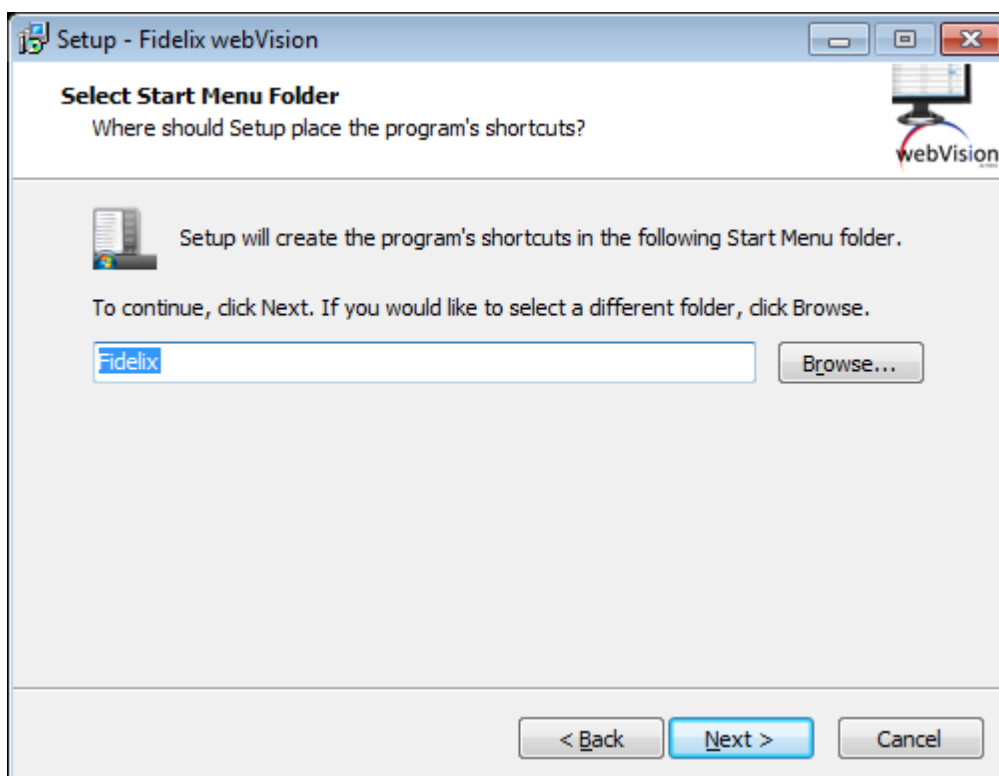
The name of the main user is inserted into the upper text field and the password is set (twice) in the middle and the lower text field. Password concealment has been removed following user feedback.

If you are updating the application to a newer version, you have the option to retain the existing passwords.

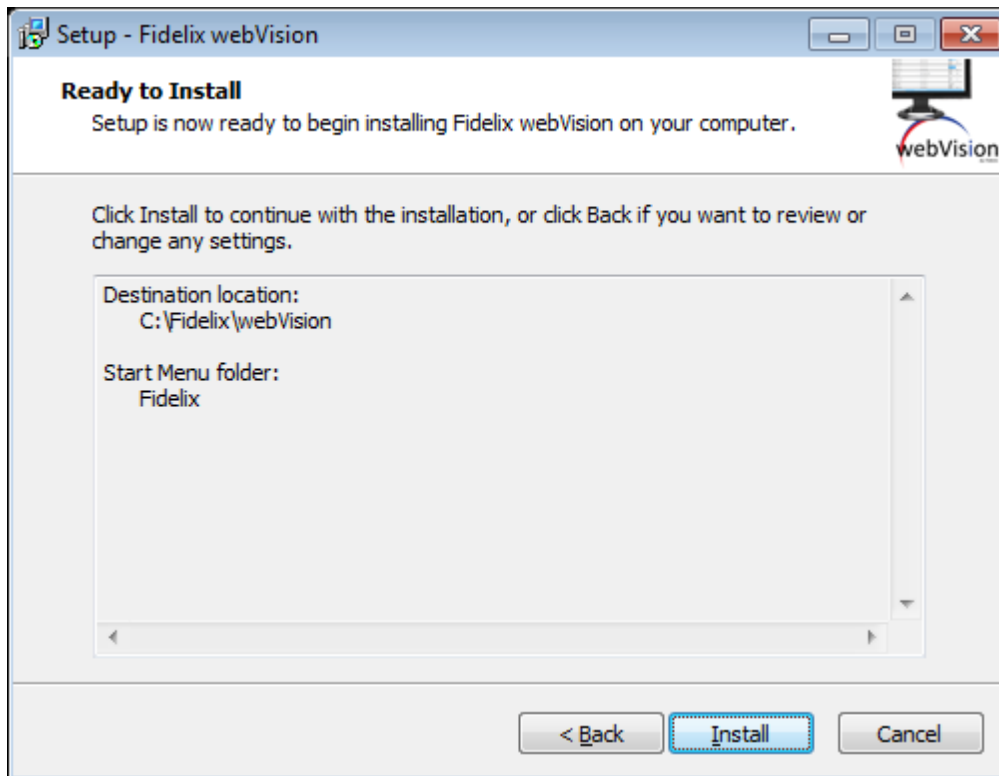


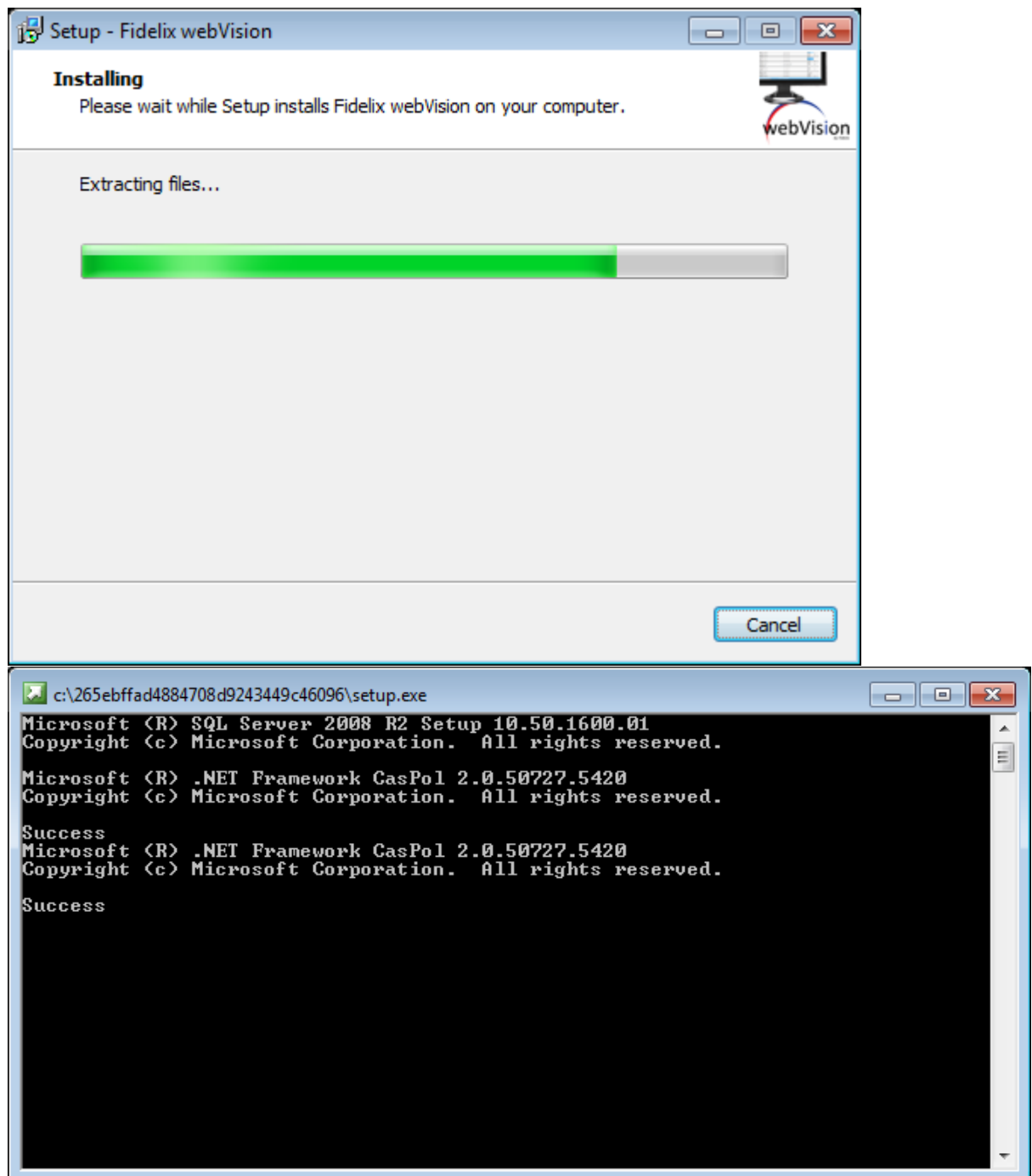
2.8 Shortcut

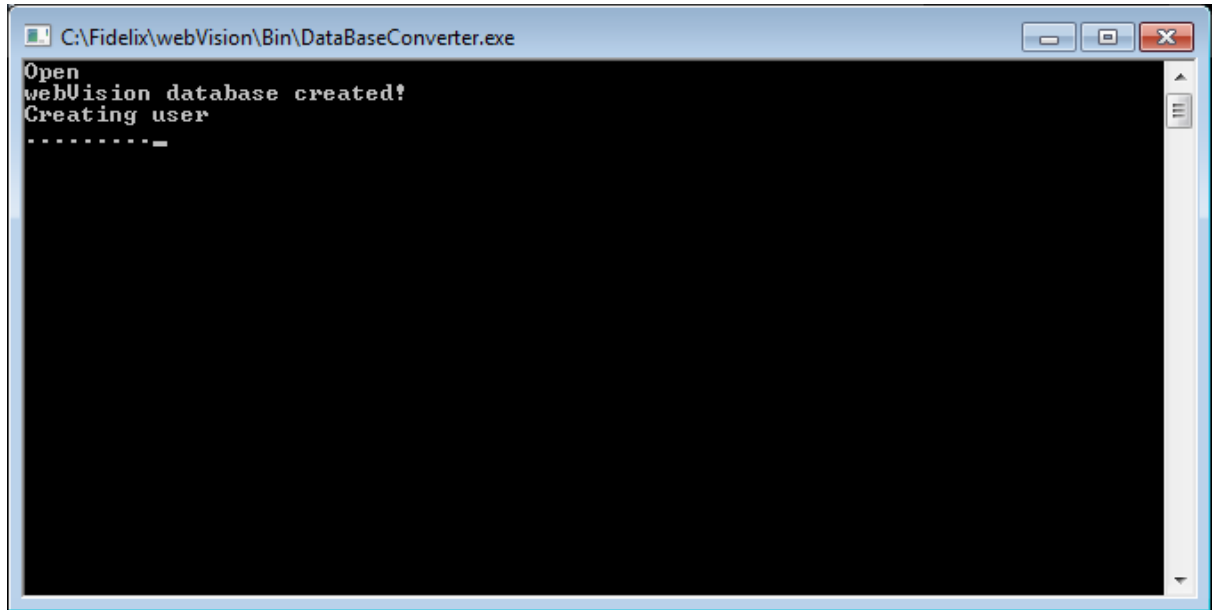
Choose the name and location where you want to place the shortcuts in the Install Folder.



2.9 Verify installation







3 Activation

3.1 Activating the installation

After installation, WebVision must be activated. This can be done when you start the application for the first time.



Press the button "webVision License Activation / Edit".

Edit License Settings:

Allowed Points:
☐ 300 ☐ 1000 ☒ Unlimited

Enable OPC:
☐ Yes ☒ No

Language:
☐ English ☒ Finnish ☐ Swedish

Commit Settings **Revert Changes**

Product Code:
W-4960-49fc-d575-5c96-1b10-727a
Copy Product Code

This is an Unactivated version. To activate this version you need to go: support.fidelix.fi and registrate with valid key.
<http://support.fidelix.fi>

Activation Key:

Activate **Close**

Choose the license option. Language choice does not affect the license.

After choosing the appropriate license, press the "Commit Settings". The "Product Code" text field will then be filled with your appropriate product code. By pressing the button "Copy Product Code" you will get the product code directly to your clipboard.

Go to the Fidelix Support Page, at support.fidelix.fi. Sign in and insert your product code in the activation form. Support Page will give you an activation key. Insert the key into the "Activation Key" text field and press the button "Activate". The application will restart and will see that activation:

Fidelix FdxOnline
FdxOnline service versio 8.64
No servicepack installed

Unlimited Points Activated

webVision License Activation / Edit

System:

- Restart RTF
- Restart reporting
- Restart webVision
- Stop webVision
- Open WatchDog.txt

Open webBrowser

Sync all graph

Edit:

- Stations data
- HTMLEditor
- Installer Information

Connected to 127.0.0.1:1236

Data

Service uptime: 00:01:36
Connection failed: 2/2 (DEMO1 DEMO2)
IO Points: 0/Unlimited Total 0/16000
Filter :
Idle...

Thread list

PID	Thread Name	Status
2880	DEMO1	Running
2324	DEMO2	Running
3236	CManualCommandSend	Running
3128	CSMTPServer	Running
3848	CSMTPSender	Running
2152	CAlarmThread	Running
2712	CGraphicsSyncThread	Running
1396	MailBoxThreadFunction	Running
3232	CPointForwarderThread	Running
300	WatchDog	Running

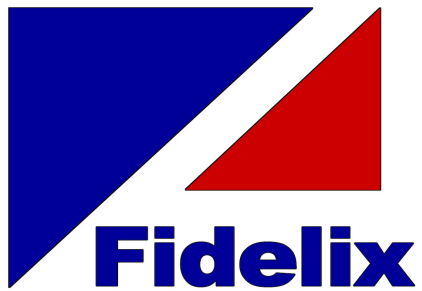
Stations

DEMO1

Host	10.10.15.251	Open webBrowser
IP-address	10.10.15.251:1235	Open TELNET
Version	Unknown	Open FTP
Point count	0	Restart
Network load	0 bytes/sec	Reboot
Messages sent	0	Sync graphics
Messages received	0	
Fails now	6	13.11.2013 1
Fails total	6	100%
Average poll time	0 ms	
Point updates	0	

DEMO2

Host	10.10.15.252	Open webBrowser
IP-address	10.10.15.252:1235	Open TELNET
Version	Unknown	



Fidelix Oy
Martinkyläntie 41
01720 Vantaa

Puh (Vaihde) 09-2501288
FAX 09-2501299

Maintenance
+358 500 123451

Technical Support
+358 500 123452