



The technical specifications might not be congruent.

- NEAM...10 (S1) series
- NENUTEC standard damper actuators are especially designed and produced for applications in the HVAC systems.
- Our wide range of NENUTEC standard damper actuators has been developed to operate and position air dampers of different sizes. Angular positioning of modulating actuators can be controlled by the NPG-1 positioner.

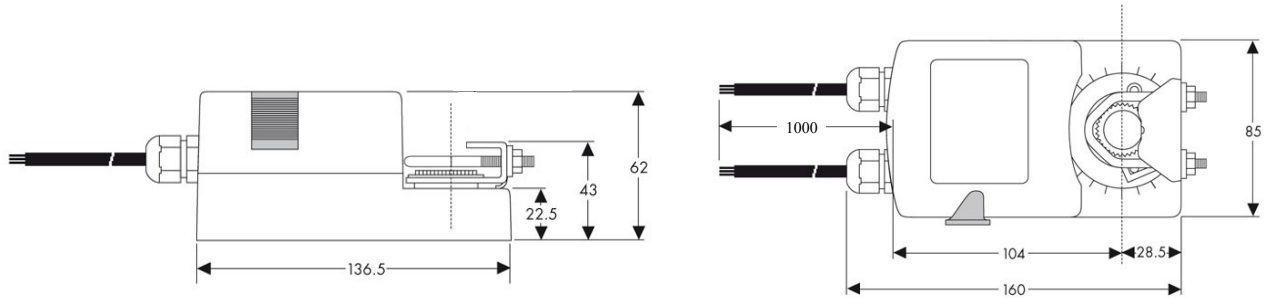
Product Features

- Torque 10 Nm
- Damper size 2.0 m²
- Power Supply AC/DC 24 V
- Control Modulating DC 0(2)...10 V and 0(4)...20 mA
- 1 adjustable auxiliary switch (SPDT)
- Shaft dimensions Ø 10 to 17 mm (new 20 mm) round /
□ 5 to 12 mm (new 14 mm) square
- Minimum shaft length 45 mm
- Selectable direction of rotation
- Adjustable angle of rotation
- Actuator with 1000 mm cable connection
- Customer version on request

Model Selection Table

Torque	Running Time	Power Supply	Auxiliary Switch	Model / Type
10 Nm	100...150 sec	AC/DC 24 V ± 10%	No	NEAM24.1-10
10 Nm	100...150 sec	AC/DC 24 V ± 10%	1 x SPDT	NEAM24.1-10 S1

Actuator Dimensions (mm)

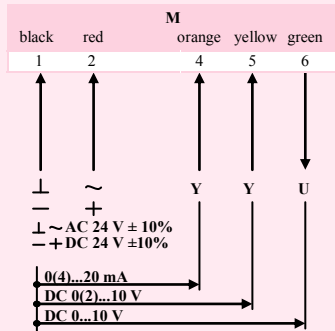


Technical Specifications

NEAM24.1...(S1)

Torque	10 Nm
Damper Size	2.0 m ²
Shaft dimensions new	Ø 10 to 20 mm round / □ 5 to 14 mm square
Power Supply	AC/DC 24 V ± 10%
Frequency	50 - 60 Hz
Control Signal (Input)	DC 0(2)...10 V or 0(4)...20 mA
Position Signal (Output)	DC 0...10 V
Power Consumption	
- Operating	6.0 W
- End Position	2.0 W
For Wire Sizing	6.5 VA
Auxiliary Switch Rating	3 (1.5) A, AC 250 V
Protection Class	III
Angle of Rotation	0°...90° (95° mechanical)
Angle of Limiting	0°...90° in 10° steps
Weight	< 1.0 Kg
Life Cycle	60'000 rotation
Sound Level	45 dB (A)
IP Protection	IP 54 (dust protected & protected against splash water)
Operating Temperature	-20°...+50° C / IEC 721-3-3
Non-Operating Temperature	-30°...+60° C / IEC 721-3-2
Ambient Humidity	5%...95% rH non condensing / EN 60730-1
Maintenance	Maintenance free
Mode of Operation	Type I / EN 60730-1
EMC	CE according to 89 / 336 / EEC

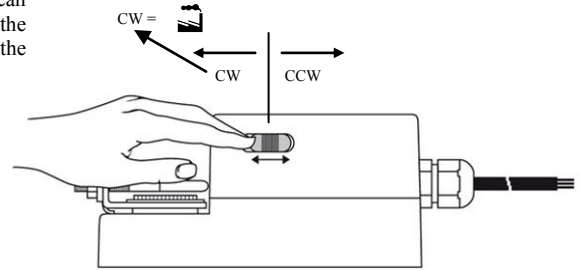
Wiring Diagram NEAM24.1...(S1) Power Supply AC/DC 24 V



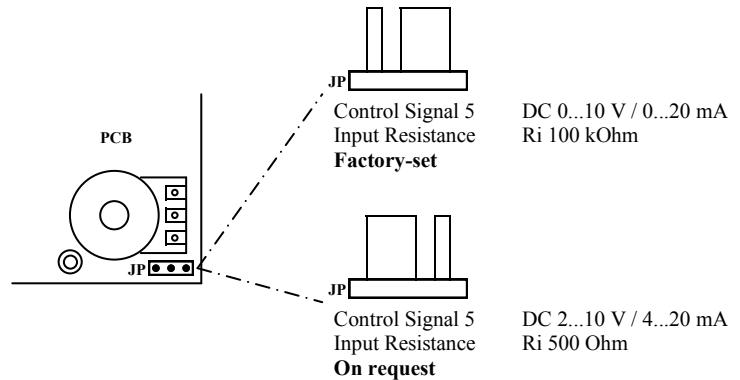
Changing Direction of Rotation NEAM24.1...(S1)

Factory-set CW!

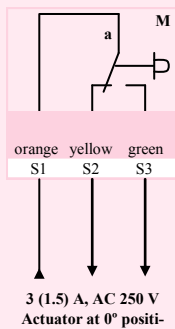
The direction of rotation can be changed by pushing the CW/CCW switch on the actuator's housing.



Adjustment of Control Signal NEAM24.1...(S1)



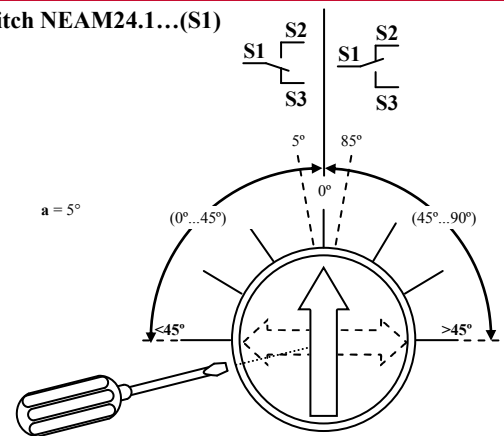
Wiring Diagram NEAM24.1...(S1) Auxiliary Switch



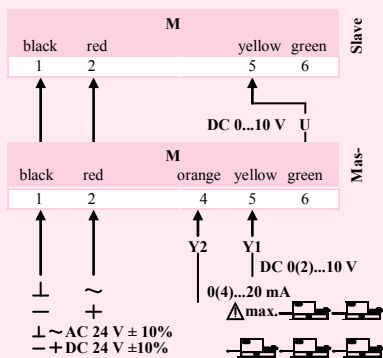
Adjustment of Auxiliary Switch NEAM24.1...(S1)

Switch a factory-set at 5°

The auxiliary switch can be optimally adjusted between 0°...90°.



Wiring Diagram NEAM24.1...(S1) Parallel Connection

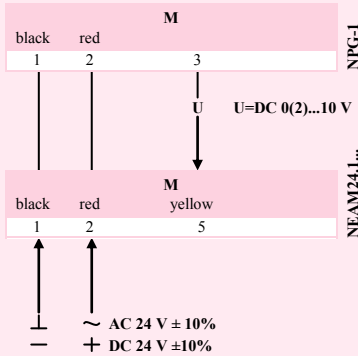


Remark

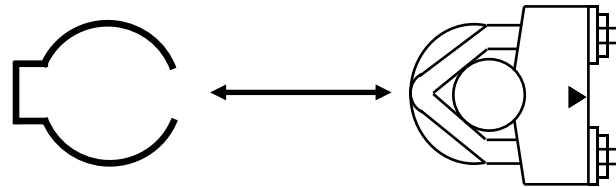
When NEAM... (S1) actuators operate in parallel, the output signal U = DC 0...10 V (terminal 6) of the master actuator must be connected to terminal 5 of the next slave actuator.

The power consumption must be observed.

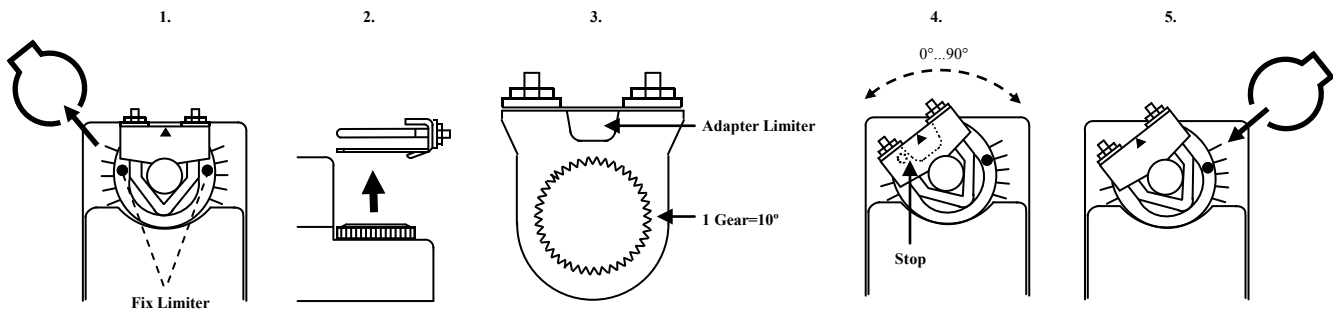
Wiring Diagram NEAM24.1...(S1)
NPG-1 Position Transmitter AC/DC 24 V



Releasing the Adapter NEAM24.1...(S1)



Limiting Angle of Rotation NEAM24.1...(S1)



OEM Customised Version on Request

NENUTEC offers you actuators in customised versions, e.g. with your own brand name, with colour-coordinated applications and with your particular demand. Please contact us for further information.

Important Remark

Consult NENUTEC representatives for specific requirements and material selections for your intended application.



This actuator includes electrical and electronic components and may not be disposed as household garbage. Please consider the local valid legislation.



AC / DC 24 V: Connect via safety isolating transformer.

AC 230 V: To isolate from the main power supply, the system must incorporate a device which disconnects the phase conductor (with at least a 3 mm contact gap).